

September 2024 Newsletter

Newsletter Editor

- [Brenan Pool \(Engenuity\)](#)

Programs Chair

- [Stephen Noeth \(Civil Design, Inc.\)](#)

Nominating Committee Chair & Past
President

- [Alison Graves \(Civil Design, Inc.\)](#)

The Arch September 2024 cover

- [GFPBR St. Louis](#)

Connect with [@ASCESTL](#)

September

04 - Section Board Meeting

06 - Strategic Planning Meeting

13 - Section Budget Meeting

15 - [Presidents and Governors Forum \(LTC\)](#)

16 - Mid-Month Update

20 - [Annual Awards Dinner](#)

21 - YMG Mizzou Tailgater

30 - End of FY24

October

01 - The Arch October 2024

06 - [ASCE Convention](#) (Tampa, FL)

08 - October Section Luncheon



2024 Section Board of Directors

President

[Chris Toenjes](#)
Roeslein & Associates

President-Elect

[Melantha Norton](#)
Nestle Purina PetCare

Secretary

[Melissa Rettig](#)
Hg Consult, Inc.

Treasurer

[Shari Cunningham](#)



From the President

I hope you all had a great Summer and enjoyed plenty of time with your family! While the [ASCE St. Louis Section](#) was less active over the past two months we did not take a complete break. [As noted in my June message](#), on July 4th we celebrated the 150th Anniversary of the Eads Bridge at [Celebrate St. Louis](#). The Red and Black

Brass Band played happy birthday while the crowd sang along. ASCE President and St. Louis Section Past-President [Marsia Geldert-Murphey](#) dedicated a replacement plaque marking this engineering marvel a [National Civil Engineering Historical Landmark](#) (NCEHL). It was good day!

On August 16th and 17th, the ASCE St. Louis Section and Saint Louis University were privileged to host the [ASCE Region 7 Assembly](#). We welcomed Region 7 Governors and delegates from **all eight sections**

SCI Engineering, Inc.

Director of Professional & Technical Development

[Tony Roth](#)

UES

Director of Administration

[Ronaldo Luna](#)

Saint Louis University

Past President

[Alison Graves](#)

Civil Design, Inc.

within Region 7 to the Gateway City. I had the pleasure to serve as a delegate from the St. Louis Section to the Assembly where I learned about activities at other sections and at the regional level. A special thanks for **Jalil Kianfar**, **Ronaldo Luna**, and **ASCE SLU** for providing facilities for the event.

With summer almost in the rearview mirror and the kids headed back to school, it is also time to get the 2024-2025 ASCE year rolling. We'll kick it off with [our Annual Dinner on the evening September 20th](#) at Jefferson Underground. I'm looking forward to a special evening that Annual Dinner Chair **Britt Burkard** has planned. We'll honor Section award winners, hand out scholarships to students, install new officers, and most importantly, share fellowship. See the invite above in this newsletter, on social media, and the Section's website to register.

At the Annual Dinner, **Melantha Norton** will be installed as 2025 Section President. Melantha is a natural leader with a passion for our profession. I look forward to her leadership over the coming year. We will also welcome current Awards Chair, **Nichole Witushynsky**, to the Section board as Director of Professional & Technical Development. If you have met Nichole, you know that she is enthusiastic about her involvement with ASCE and has been active since her initial time becoming a P.E. in Wichita, KS. I can't think of a better addition to the Section Board. Finally, I'd like to express gratitude Past-President, **Alison Graves**, who will roll off the Board. Alison has been a special leader for our Section. To better serve the Section's membership, she led the effort in [2023 to develop a new five-year Strategic Plan](#). While her presence on Section Board will be missed, I know that she will continue her strong contributions to Government Affairs and other leadership positions at the Region and Society-level.

As this will be my last President's message, I would like to express what an honor it was to serve as ASCE St. Louis Section President. 2023-2024 was a special and unique year. Beyond the incredible annual activities that our members put on every year, such as **Geo-Confluence**, the **EWRI Spring Symposium**, monthly luncheons, and **Young Member Happy Hours**, we had several special events. These included [Cities of the Future](#) Premiere at the [Saint Louis Science Center](#) and the [Eads Bridge 150th Anniversary Celebration](#) on July 4th (noted above). Our student chapters had a very busy year highlighted by [Missouri S&T hosting the Mid-America Student Symposium](#) in which **ASCE SLU took first place** overall. Finally, we rolled out and began implementing the **Section's 2023–28 Five Year Strategic Plan**.

It was also a special honor to serve as St. Louis Section President at the same time St. Louis Section Past President **Marsia Geldert Murphy** served as Society President. We are all extremely proud of what Marsia has accomplished as President with the energy and enthusiasm she brought to the highest position in ASCE. I've learned how incredibly busy Marsia's presidential schedule is. This makes the fact that Marsia was so generous with the time she gave her home section so much more special. Over the past year, Marsia spoke at the **Section's January luncheon** and dedicated a replacement plaque marking NCEHL Plaque at the Eads Bridge. She welcomed attendees to the Section's *Cities of the Future* Premiere on the evening **after** she served as a panelist of the **Geo-Institute St. Louis Chapter's Geo-Legends event**. She visited the Section's student chapters, was at Mid-America in Rolla, and [received a well-deserved Honorary Doctorate from Missouri S&T](#). Thanks you, Marsia!

Christopher Toenjes

2024 St. Louis Section President

Eads Bridge 150th Anniversary



The world's first bridge with alloy-steel tubular arches, [St. Louis's own Eads Bridge](#), turned 150 years on July 4th. It remained the longest bridge in the United States for almost 100 years and is the oldest bridge still standing over the Mississippi River... and stands proud of the civil engineering innovation and excellence in the Gateway City.

undefined

undefined

undefined

undefined

ASCE STL was amongst many key stakeholders of the festivities, led by **Jeff Fouse** as a new NHCEL plaque was mounted to the Bridge. ASCE President **Marsia Geldert-Murphey** gave a fantastic speech to the crowd at the 150th celebration alongside the [Red and Black Brass Band](#) along the riverfront. **Melantha Norton**, **Lyle Simonton**, **Chris Toenjes**, and **Michael Buechter** also attended from ASCE STL.

More information from [St. Louis Post-Dispatch](#)



ASCE 2024 Convention will feature a variety of meaningful programming experiences whether you are a first-time attendee or a veteran convention goer: the annual ASCE members meeting, keynote presentations, invited panels, case histories, and research papers.

[Visit the Convention website](#)

ASCE Region 7 Awards

Help us honor and congratulate outstanding [ASCE STL recipients of this year's Region 7 Awards](#)! Thank you for your service to our Society.



Region 7 Annual Assembly in St. Louis



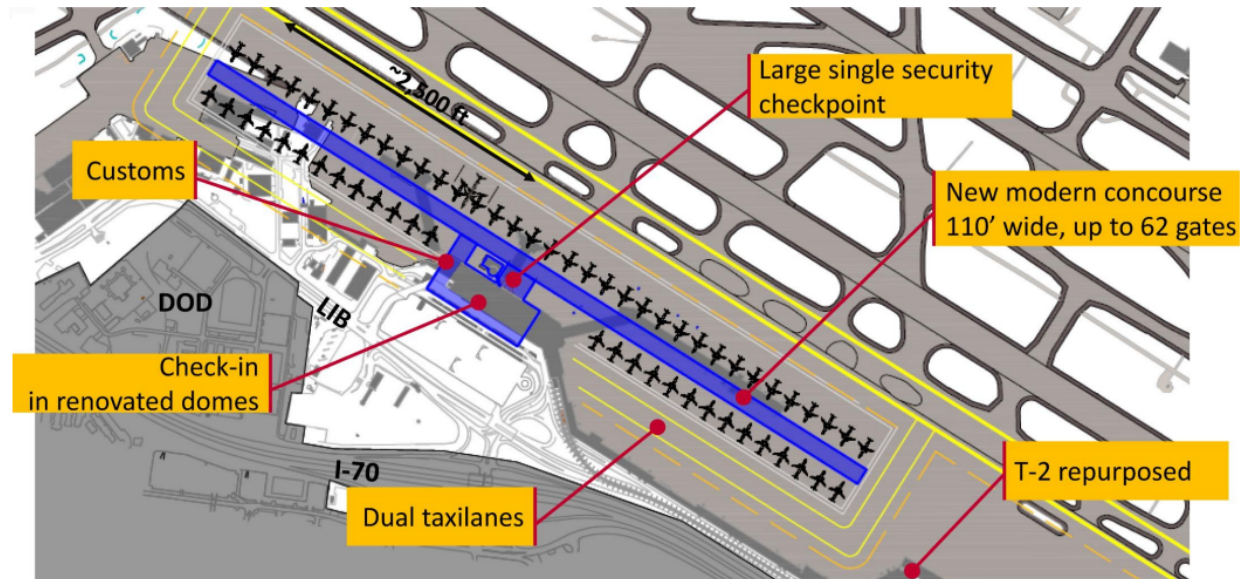
Region 7 Governors along with section and branch delegates gathered in St. Louis on August 16-18 for the [ASCE Region 7 Annual Assembly](#) at [Saint Louis University](#). ASCE STL was proud to cosponsor this event, helping to fuel great conversations and activities

as we work together to shape the future of civil engineering across the Midwest and beyond!



October 2024 Section Luncheon

ASCE STL is proud to partner with [T&DI St. Louis Chapter](#) to host **Jason Christians** at our upcoming October luncheon! He will present the **St. Louis Lambert International Airport Master Plan**.



In this presentation, Jason will discuss the [St. Louis Lambert International Airport Master Plan](#), mainly what goes into the Master Plan, why it is needed, and also the upcoming potential development at the Airport. The outcome of the recent Master Plan was [that a new terminal, garage and roadway system was recommended](#). We will also discuss the various alternates for the terminal and roadway system. We will wrap up the presentation on a discussion of the likely funding sources for the [Consolidated Terminal Program](#).



Jason Christians

Jason is the Assistant Director of Planning and Engineering for [St. Louis Lambert International Airport](#) and has been in the aviation industry for over 30 years. He graduated with a BSCE in 1993 from Southern Illinois University Edwardsville and earned a MBA in 2001 from University of Illinois Springfield. Jay has worked for state and local agencies as well as a consultant firm performing all aspects of aviation projects.

October 8, 2024

Save the Date for now!

[Stephen Noeth](#), Programs Chair

When: Tue, October 8th @ 12:00

Registration at 11:30, lunch served at 11:45, and program begins at 12:00. One (1) PDH is available from this program for attendees.

Special thanks to our venue host



- Saint Louis University
- SLU Department of Civil, Computer and Electrical Engineering!

Call for Section Volunteers



The Section is looking for more volunteers to become involved and lead our amazing committees. Build leadership skills, give back to your Section, meet new friends... it's wins all around! We're here to serve **#ASCESTL**, but come serve alongside us.

Reach out to [any Board of Director or Section volunteer](#) to get involved!

- Government Advocacy
 - Membership Champion
 - Pre-College (K-12) Outreach
 - Student Involvement Outreach
 - Sustainability
 - Specialty Institutes & Groups
 - Annual Dinner & Awards
 - Communications & Website
 - Diversity & Inclusion
 - Fundraising
 - History & Heritage
 - Life Members
 - Programs
 - Scholarships
-



GEO-
INSTITUTE
St. Louis Chapter



STRUCTURAL
ENGINEERING
INSTITUTE
St. Louis Chapter

Structural and Geo-Confluence

Wednesday, November 6, 2024
River City Casino, St. Louis, Missouri

Registration is open for the thirteenth annual Structural and Geo-Confluence hosted by the St. Louis Chapters of SEI and GI. This one-day, in-person conference is open to all. Registration and continental breakfast begin at 7:15 a.m. and the program runs from 8 a.m. to 5 p.m. Continental breakfast and lunch are provided.

Agenda includes:

- "Stabilization of the Bluffs at Pointe du Hoc, Normandy France" - John Wolosick, Keller
- "Geotechnical Engineering in the Age of Machine Learning and AI" - Yousef Hashash, University of Illinois
- "Construction Law" – J. D. Glisson, Greensfelder
- "Foundation Design and Construction: Lance Corporal Lean Deraps I-70 River Bridge in Rocheport, MO" - Paul Axtell, Dan Brown/UES
- "Arkabutla Dam Outlet Conduit Internal Erosion – The importance of Monitoring Instrumentation Data" - Mark Alstrom, USACE
- "MOAW Intake Structure on Meramec River" - Jeff Hill
- "Navy Bath tub project in Indiana" – Ben Erschen and Shane Rasch, Jacobs
- "Ready to Meet Changing Needs: WUSM Neuroscience Research Building" – Kurt Bloch and Julie Shaw, Cannon Design
- "Case Study of Deficient Large Diameter Drilled Pier Using Slurry" – Armando Esquivel, Reitz & Jens, Inc.
- "Lacon Bridge Rehabilitation Design, Construction, and Load Rating" – Chad Hodel, WHKS
- "Forensic look and FEMA Analysis for Search and Rescue Cooling Tower" – Chad Fischer, Engineering Systems Inc

Registration Class	Early Rate by Wednesday, October	Regular Rate October 17 to October 30	Late Rate After October 30 and walk-ins
Professional, ASCE Member	\$225	\$275	\$325
Professional, non-ASCE Member	\$250	\$295	\$325
Full-time Students	\$75	\$100	\$150
Local, State, or Federal Government	\$190	\$225	\$325
Exhibitor (includes 1 registration)	\$500	\$500	\$500

The St. Louis Chapters of the [Geo-Institute \(GI\)](#) and [Structural Engineering Institute \(SEI\)](#) are excited to announce the ninth annual **Structural and Geo-Confluence**. The conference will be a full-day event featuring technical topics and case histories presented by local and national experts. Presentations will focus on the confluence of geotechnical and structural engineering. The conference is open to all engineering and construction professionals and students.

Registration details and the speaker/topic lineup to be announced soon!

Yan named ASCE Fellow



[Dr. Grace Yan](#), a Missouri S&T faculty member specializing in structural engineering, was recently named an [ASCE Fellow](#). Yan, who joined S&T in 2014 and directs the [Center for Hazard Mitigation and Community Resilience](#) and the [Wind Hazard Mitigation Laboratory](#), notes it reflects both her technical contributions and her commitment to leadership, mentorship, and service. Yan has pioneered the development of tornado simulators to enhance tornado-resistant design standards. A prolific speaker and author on structural engineering and hazard mitigation, she will chair the [Americas](#)

[Conference on Wind Engineering in St. Louis](#) in May 2025 and currently leads the board

2025 Multi-Region Leadership Conference (MRLC) - Cleveland, OH



The 2025 Multi-Region Leadership Conference (MRLC) will be hosted in Cleveland, Ohio. The [ASCE Cleveland Section](#) Younger Member Group will be hosting the **Central Region Younger Member Conference (CRYMC)** in partnership with ASCE, and the Cleveland Section of ASCE.

Visit [ASCE CYM](#) and [ASCE LTC](#) for updates for more information!

Sponsorships available now

go.asce.org/crymc



Younger Members Group

After a relaxing summer break we are back and ready for another great year for the YMG! Hopefully you've had a great summer and are ready for some exciting events this year.

We will be bringing back monthly happy hours and will have additional social and technical events throughout the year. Stay tuned for more announcements to be made. We hope to see you at a YMG event and can't wait to see what this year has in store!. We also wish all student members the best of luck as they hit the books again this semester. Remember to stay involved with your local ASCE student chapter! 😊



JOIN US FOR A
Mizzou Tailgater

VANDERBILT UNIVERSITY
 V. UNIVERSITY OF MISSOURI

September 21, 2024 | Start at 11 am
 Turner Avenue Parking Garage

SEE MORE ON ASCE COLLABORATE



Upcoming YMG Events

- Mizzou Tailgater w/ [ASCE KC YMG](#)
 - Sat, September 21 @ TBA

Younger Members Chairs

[Alicia Padilla](#)

Special Inspections & Design

[Jacob Mette](#)

Prairie Engineers, PC



**STRUCTURAL
 ENGINEERING
 INSTITUTE**
 St. Louis Chapter

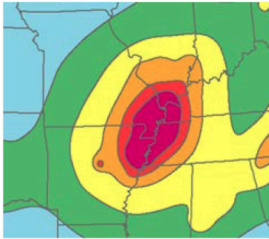
Schrand named to SEI Board of Governors

SEI STL and ASCE STL are proud to extend our congratulations towards [Chad M. Schrand, P.E., S.E., F.SEI, M.ASCE](#), 2019 St. Louis Section President, for being named as a [2025 member of the Structural Engineering Institute \(SEI\) Board of Governors](#).

Forge ahead and seize new opportunities with SEI into a new era, Chad!



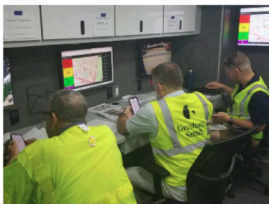
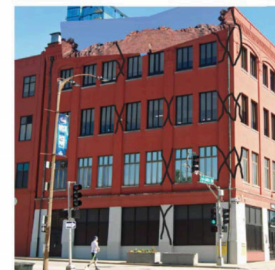
ASCE St. Louis Section SAVE Coalition Members Participate in July Dense Urban Terrain Exercise With National Guard in Downtown St. Louis



St. Louis, Mo – Imagine a massive earthquake rocked St. Louis while a Cardinals game was in progress. The stadium collapses, trapping thousands, Mississippi River bridges fall, and a chemical spill contaminates survivors. National Guard urban search & rescue and mass chemical decontamination units from across the country rush to St. Louis. This was the scenario for the Dense Urban Terrain exercise in downtown St. Louis this July.



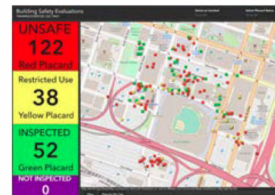
While the National Guard was rescuing fans trapped in Busch Stadium, the Missouri State Emergency Management Agency's Structural Assessment and Visual Evaluation (SAVE) Coalition, an ASCE supported group of public and private sector volunteer engineers, architects and building officials, who perform post-disaster building safety evaluations, worked on the surrounding buildings. Forty-six SAVE members, including guests from similar programs in Tennessee, Kentucky, and Indiana, performed 212 simulated building evaluations over a 5-hour period. Data was reported in real time using a mobile device app and displayed in local EOCs on a web-based dashboard.



Five sUAV operators from the Civil Air Patrol simulated drone flights to allow SAVE members to observe rooftop damage. The U.S. Department of Veterans Affairs supported SAVE by providing their mobile command post.



You can get involved - the SAVE Coalition provides a free 7 PDH class to engineers interested in joining. SAVE is especially interested in recruiting newly licensed civil, geotechnical and structural engineers. SAVE is a low time commitment organization and volunteers are never under any obligation to deploy. The next SAVE training class in St. Louis will be November 8, 2024. Learn more at:



[Missouri SAVE Coalition | SEMA \(mo.gov\)](https://www.missourisavecoalition.org)

- Benjamin Ross, P.E., M. ASCE

Ben Ross has been a member of SAVE for 28 years and serves as one of ASCE St. Louis Section's representatives on the SAVE Board. ross@ess-inc.com





29th Annual Partners Golf Classic



The Leukemia & Lymphoma Society
Fighting Blood Cancers



Shriners Hospitals
for Children™

All proceeds benefit our featured charities.
Together, we've raised over **\$318,000!!**

Thursday, September 26, 2024

The Falls Golf Club
1170 Turtle Creek Drive, O'Fallon, MO
Jeans and denim not allowed

BACK IN 2024
LIVE SCORING!

SCHEDULE

FREE	Driving Range
10:30 AM	Registration
11:00 AM	Lunch
12:30 PM	Afternoon Shotgun
5:30 PM	Dinner, Raffle & Awards

REGISTRATION

online (preferred) at
birdease.com/partnersgolfclassic

OR

Return form with check payable to **GSITE**
Send to:
Kelly Schaefer
411 N. Tenth Street, Suite 200
St. Louis MO 63101

Website QR Code:



PARTNERS GOLF CLASSIC is a collaboration between transportation industry partners of Eastern MO and Southern IL. Partners include local and state governments, design consultants, highway contractors, and suppliers.

REGISTRATION INCLUDES

Automatic Raffle Entry to Win:

\$500 Visa Gift Card

Two \$250 Visa Gift Cards

(must be present to win)

- * **Driving Range Balls** *
- * **Beverages on Course** *
- * **8 Contest Holes** *
- * **Team Putting Contest** *

Lunch & Awards Dinner

Flight Prizes

Attendance Prizes

LOTS OF FUN!!

For more information, please contact:

Kelly Schaefer @ 314-749-0573

KSchaefer@lochgroup.com



MEMBERSHIP TAKES YOU
WHERE YOU WANT TO GO

ASCE 

FORWARD
FASTER.

JOBS CORNER

[VIEW ALL PARTNER JOB POSTINGS](#)

ROADWAY PROJECT MANAGER

TRAFFIC ENGINEER

GBA - GREATER ST. LOUIS LOCATIONS



ASCE St. Louis Section

Engineering Center of St. Louis

St. Louis, MO

asceSTL.org

[Unsubscribe](#)

CONNECT WITH @ASCESTL



© 2024 ASCE St. Louis Section

