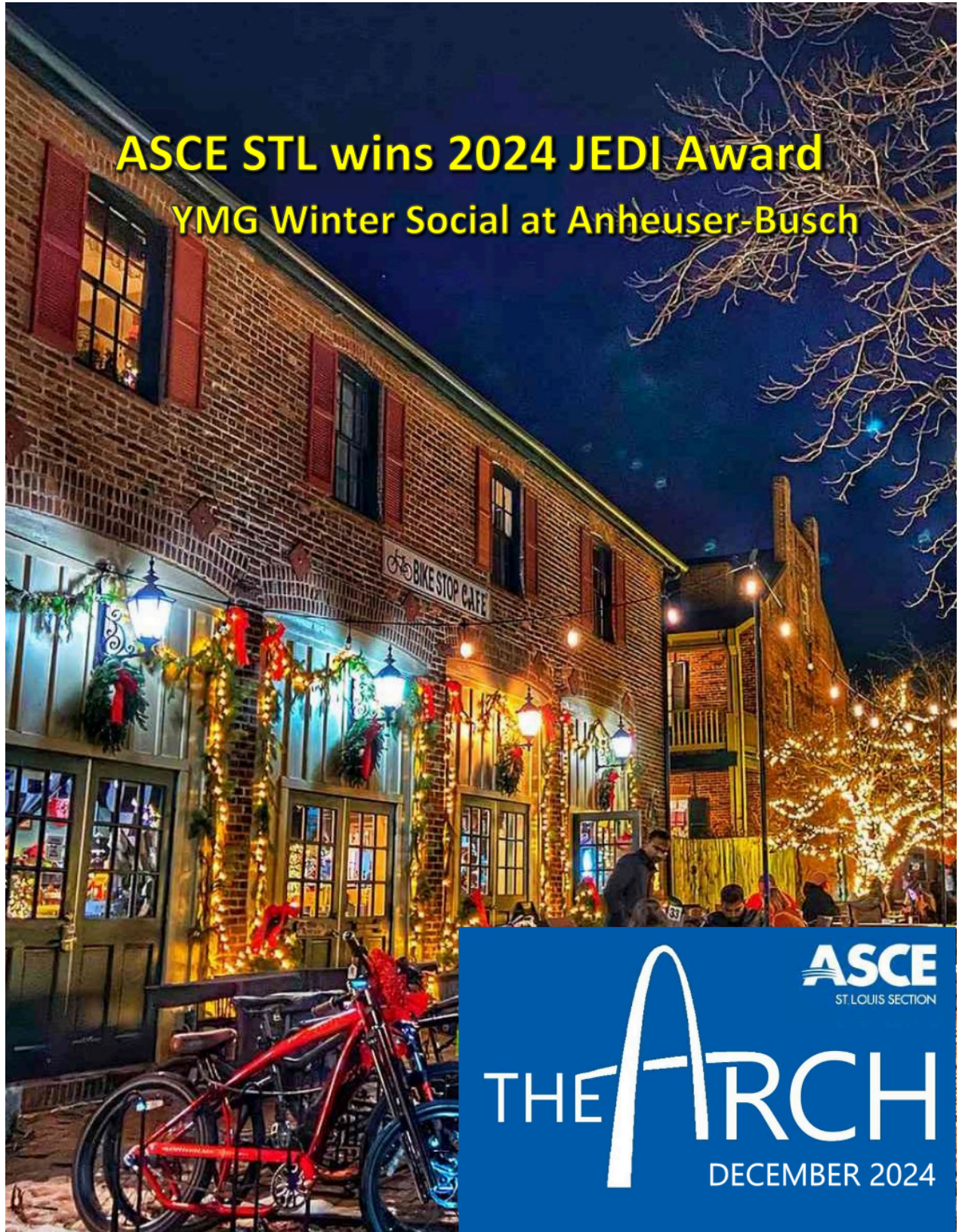


December 2, 2024



ASCE STL wins 2024 JEDI Award

YMG Winter Social at Anheuser-Busch

ASCE
ST. LOUIS SECTION

THE ARCH

DECEMBER 2024



December 2024 Newsletter

The Arch Newsletter Team

Newsletter Editor

- [Brenan Pool \(Engenuity\)](#)

Programs Chair

- [Stephen Noeth \(Civil Design, Inc.\)](#)

Scholarships Chair & Past President

- [Chris Toenjes \(Roeslein & Associates\)](#)

The Arch December 2024 cover

- Photo by [@dogwoodchannelcat](#) (Instagram)

Upcoming Section Events

December

03 - [Giving Tuesday with MSPE](#)

12 - [Section Holiday Social](#)

16 - [The Arch Mid-Month](#)

25 - [Christmas](#)

January 2025

01 - [New Year's Day](#)

02 - [The Arch January 2025](#)

14 - [January Luncheon with EWRI STL](#)

Connect with [#asceSTL!](#)

2024 Section Holiday Social



ST. LOUIS SECTION

2024 ASCE HOLIDAY SOCIAL

TIME:

Thursday, December 12, 2024
6:00 PM to 8:00 PM

LOCATION:

SqWires Annex Room
1415 S. 18th St.
St. Louis, MO 63104

MEMBERS AND A GUEST ARE CORDIALLY INVITED TO OUR 2024 HOLIDAY SOCIAL AT SQWIRES. PLEASE JOIN US FOR A GREAT NIGHT OF FELLOWSHIP, FOOD, AND SPIRITS. APPETIZERS AND BEVERAGES FROM 6:00 PM TO 8:00 PM

Cost: Free

Parking: Self Parking - Free. Guest parking lot is located at the north end of SqWires Restaurant. Street parking is also available.

RSVP: RSVP by 4:00 PM on Thursday, December 5, 2024.

Please RSVP online with the following link:

[2024 ASCE Holiday Social](#)

or by email to Stephen Noeth at snoeth@civildesigninc.com

Register for this event!

When: Thu, December 12th @ 6:00pm

Register by 4pm on December 5th!

Where: [SqWires Annex Room](#)

2025 Section Board of Directors

President

[Melantha Norton](#)
Nestle Purina PetCare

President-Elect

[Melissa Rettig](#)
Hg Consult, Inc.

Secretary

[Shari Cunningham](#)
SCI Engineering, Inc.

Treasurer

[Tony Roth](#)
UES

Director of Professional & Technical Development

[Nichole Witushynsky](#)
GBA

Director of Administration

[Ronaldo Luna](#)
Saint Louis University

Past President

[Chris Toenjjes](#)
Roeslein & Associates



From the President

'Tis the Season! I love this time of year with all the holiday festivities. I hope you had a great Thanksgiving with your loved ones and friends. I was able to spend time with my family and friends in Kansas City, my hometown. Last month, I also had the chance to volunteer with **Pre-College**

Outreach at SLU's iSCORE STEM Camp,

attend the YMG's meeting as they inducted new Board members, and participate as a judge for **ASCE SLU's Candy Construction** masterpieces. It's been a busy and fun season so far!

I recently submitted the **Outstanding Section Application and Annual Report** for the St. Louis Section, which allowed me to reflect on our achievements from the past year. The efforts and achievements of the Section have also been recognized by ASCE. I'm proud to announce that the **St. Louis Section has been awarded the 2024 ASCE JEDI Award**. This award recognizes Sections and Branches that are making significant and impactful contributions to the enhancement and awareness of justice, equity, diversity, and inclusion (JEDI) within the profession of Civil Engineering. The award plaque will be presented at the January monthly luncheon. Congratulations St. Louis Section!

As the year comes to a close, we continue to actively promote the civil engineering profession, ASCE, and the St. Louis Section. I'm happy to share that our Section is featured in the Missouri Transportation Annual Publication's 2024 Edition. [The feature includes a Q&A and a fantastic ad showcasing ASCE and the St. Louis Section.](#) A special thanks to Chris Toenjjes for leading this effort. Printed copies will be available for distribution soon.

During the holiday hustle and bustle, I'm reminded of the impact we have as engineers in ensuring safety and well-being in everyday life. From roadways and clean water to safe structures and a cleaner environment – our work is vital. **I encourage you to reflect on your accomplishments as you set your goals for 2025.** As you reflect on the year, I hope you can find time to cherish those close to you and embrace moments of joy during this season.

Continuing in the holiday spirit, don't forget to mark your calendars for the **annual Holiday Social** on Thursday, December 12th at SqWires Restaurant & Annex. The event is free for members and a guest. RSVP by December 5th online or via email to [Stephen Noeth](#). Hope to see you there.

Happy Holidays, St. Louis Section!

Melantha Norton

2025 St. Louis Section President

Reminder to renew your ASCE membership by December 31st!

Unlock full benefits of your ASCE membership such as 10 included PDHs, one (1) free Institute enrollment, discounted continuing education and events, ASCE's The Source newsletter, connect with peers, compare salaries, and get valuable everyday discounts!



2024 ASCE Structural & GeoConfluence

The 2024 Structural and Geo-Structures Confluence, an effort between the Geo-Institute (G-I) and Structural Engineering Institute (SEI) St. Louis Chapters, brought a wave of innovation and expertise to St. Louis on November 6th! This dynamic, full-day event attracted nearly 170 industry professionals, 30 students, and 19 exhibitors, creating an atmosphere buzzing with knowledge-sharing and networking.

Highlights of the day included the kickoff presentation delivered by **John Wolosick** (Keller), who captivated the audience with his talk on "Stabilization of the Bluffs at Point du Hoc, Normandy, France." Attendees were also riveted by **Kurt Bloch** and **Julie Shaw** (CannonDesign) as they showcased [WashU Medicine Jeffrey T. Fort Neuroscience Research Building](#), **J.D. Glisson** (Greensfelder) discussing construction law, **Mark Alstrom** (USASCE) lecturing on the [Arkabutla Dam Outlet Conduit Internal Erosion](#), **Chad Hodel** (WHKS) discussing [Lacon Bridge's Rehabilitation Design](#), and others. Here's to shaping the future of structural and geotechnical engineering together!



Call for Section Volunteers

+ VOLUNTEERS NEEDED

Take our survey to offer your skills to #asceSTL!



Fill out our interest form today!

HELP THE NEXT GENERATION

GIVE BACK. LIFT UP. WITH THE GIFT OF STEM EDUCATION

The NSPE-MO Educational Foundation provides annual financial support to the Missouri State MATHCOUNTS Program and Chapter Grants to support a variety of STEM activities throughout the state.

GIVING TUESDAY

NSPE-MO MISSOURI SOCIETY OF PROFESSIONAL ENGINEERS EDUCATIONAL FOUNDATION

www.MSPE.org



ASCE STL is a 2024 JEDI Award Winner



We're proud to share that ASCE STL has been honored with the [2024 JEDI Award!](#) 🏆 Presented by [ASCE's MOSAIC](#), this recognition celebrates Sections/Branches that go above and beyond in advancing justice, equity, diversity, and inclusion (JEDI) within the civil engineering community.

Thank you to our incredible members for fostering a welcoming and inclusive culture. Let's keep building a stronger, more equitable future together!

November Luncheon and Burken receives President's Medal



November's Luncheon was packed as Dr. Joel Burken delivered an inspiring presentation on **The Civil Engineering Workforce of the Future**. Co-hosted with [MSPE St. Louis](#) at SLU, Dr. Burken highlighted the growing demand for civil engineers amid historic infrastructure investments, the shrinking workforce, and the need for resilience and diversity in our field. We also celebrated Dr. Burken's exceptional contributions as he received the prestigious [ASCE President's Medal](#) from 2024 ASCE President Marsia Geldert-Murphey. Congratulations, Dr. Burken, and thank you for an engaging and insightful discussion!

Pre-College Outreach Volunteering



Institute for STEM Collaboration, Outreach, Research and Education (iSCORE)

We are broadening the STEM ecosystem in an effort to forward SLU's transformative vision to foster growth, inspire innovation, and advance initiatives that serve a higher purpose and a greater good.

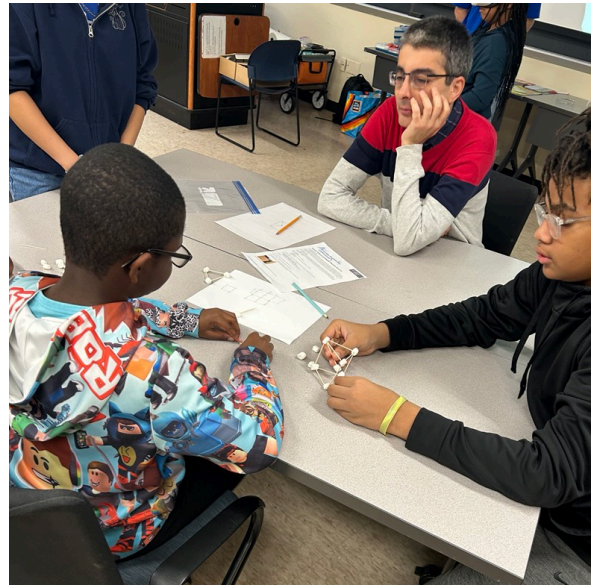
- Tuesdays/Wednesdays after school: 4pm - 5pm at Grannemann Elementary

- Spring Saturdays: 9:00am - 3:30pm, Feb 22, Mar 8, Mar 22, Apr 5, and Apr 12

Volunteers could either help out with an activity or lead their own for any of the above dates. Contact iscore@slu.edu to volunteer. [More info can be found here.](#)

ASCE STL volunteers were delighted to give back at SLU's iSCORE STEM Camp on November 16th! Many joyous future engineers were impacted by our efforts to foster STEM initiatives for kids. Section President **Melantha Norton**, President-Elect **Melissa Rettig**, Pre-College Outreach Chair & YMG Co-President **Jacob Mette** joined ASCE SLU Faculty Advisor **Jalil Kianfar**.





Check out our article in the 2024 MO Transportation Annual! (pg.24)



Younger Members Group (YMG)

We recently held elections for our 2025 Board and we're ecstatic to welcome the following faces onboard to lead



ST. LOUIS SECTION

YOUNGER MEMBER GROUP

the YMG! Also, we had the BIGGEST happy hour last week (thank you to GBA for your sponsorship.)

MEET THE 2025 BOARD



Alicia Padilla
Co-President



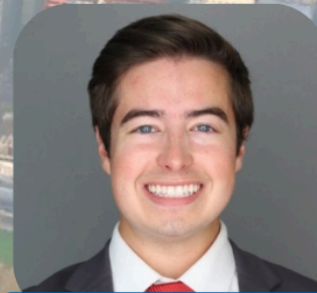
Jacob Mette
Co-President



Brandon Hamel
President-Elect



Olivia Paxson
Treasurer



Dakota Jarosz
Socials Chair



ST. LOUIS SECTION

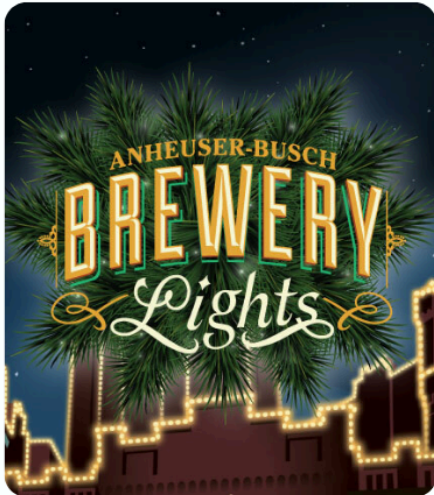
YOUNGER MEMBER GROUP



ASCE STL YMG

ASCE ST. LOUIS SECTION
YOUNGER MEMBER GROUP

WINTER SOCIAL ANHEUSER-BUSCH



1200 LYNCH STREET, ST. LOUIS, MO

**FRIDAY, DECEMBER
6TH @ 6 PM**

**\$5 PAYMENT REQUIRED TO SECURE
YOUR SPOT & DISCOUNT**

RSVP BELOW BY NOV 30TH!
TICKETS WILL BE SENT OUT DEC 2ND

**+1's ARE
WELCOME!**

Secure your spot today!

Upcoming YMG Events

- [YMG Winter Social](#)
 - [Fri, Dec 6th, 6pm @ Anheuser Busch Brewery](#)

YMG Co-Presidents

[Alicia Padilla](#)

Special Inspections &
Design

[Jacob Mette](#)

Lochmueller Group



Thank you to our sponsors:

GBA



EDSI
ENGINEERING DESIGN SOURCE, INC.

WSP

 **IMEG**



**SPECIAL INSPECTIONS
& DESIGN**

The Upchurch Group
architects engineers land surveyors



OATES
ASSOCIATES

SAVE THE DATE FOR SPRING!

The St. Louis Chapter of EWRI is excited to count down the days to our 2025 Spring Symposium to be held **February 28th** at [Il Monastero!](#)



**ENVIRONMENTAL &
WATER RESOURCES
INSTITUTE**
St. Louis Chapter

**WATER
INSTITUTE**
SAINT LOUIS UNIVERSITY

EWRI of ASCE - St. Louis Chapter

2025 Environmental & Water Resources Spring Symposium and Workshop

WATER, WATER, EVERYWHERE

You are invited to attend a full-day educational symposium and workshop for professional development and to learn about water-related technical topics.

SAVE THE DATE: Friday, February 28, 2025

Technical Program 8AM to 4PM

Location:

Il Monastero at
Saint Louis University
3050 Olive St
St. Louis, MO 63103

**Stay tuned for
registration information!**

Registration will include:

Up to 6 Professional
Development Hours,
continental breakfast,
and lunch.

CALL FOR ABSTRACTS

EWRI of ASCE – St. Louis Chapter requests abstracts for presentations. Presentation time slots can be between 30 minutes to 1 hour. Presentations can include topics such as:

- | | | |
|---------------------------|--------------------------------------|------------------------|
| Construction challenges | Adapting to climate change | Nature-based solutions |
| Permitting and compliance | Emerging and innovative technologies | Stream restoration |
| Case studies | Water quality | Sediment transport |
| Wastewater treatment | Hydrology & hydraulics | Sustainability |

Submit an abstract to skeeven@hrgreen.com by November 27, 2024.

Abstracts should be a paragraph summarizing your presentation topic.
You will be notified by January 10, 2025 if your presentation was selected.

For more information, please contact:

Samantha Keeven
Spring Symposium/Workshop Chair
ASCE-EWRI St. Louis Chapter
skeeven@hrgreen.com

Geo-Institute (GI) St. Louis Chapter



**GEO-
INSTITUTE**
St. Louis Chapter

Hopefully everyone was able to spend some quality time with their family over the Thanksgiving Holiday, and are excited to get back into all things ASCE! The next G-I St. Louis Chapter meeting is **scheduled for December 12th between 5pm and 6pm**, just prior to the ASCE

Holiday Social. **Location will be at SqWires.** The call-in number may not be available depending on noise level at the facility.

We are also looking for March Luncheon speaker options. If you, or someone you know has a great topic to share at the March luncheon, please have [them email me with details](#). **Adopt an Engineer Update** – We have our first two students that will be enrolled in our Adopt an Engineer program. We are looking to support more students and for them to [apply on our G-I St. Louis webpage!](#)

Have a safe and Happy Holiday Season! - Travis

Upcoming G-I Events

- December Chapter Meeting
 - Thu, Dec 12th, 5pm @ [SqWires](#)

G-I STL Chair

[Travis Kassebaum](#)

Terracon



2025 Multi-Region Leadership Conference (MRLC) - Cleveland, OH



The 2025 Multi-Region Leadership Conference (MRLC) will be hosted in Cleveland. The [ASCE Cleveland Section](#) YMG will be hosting the **Central Region Younger Member Conference (CRYMC)** in partnership with ASCE, and the Cleveland Section of ASCE. Join the Central Regions **02/27/25 - 03/01/25** in Ohio!

Visit [ASCE CYM](#) and [ASCE LTC](#) for updates for more information!

Sponsorships available now!

go.asce.org/crymc

2026 Report Card for Missouri's Infrastructure - Call for Volunteers

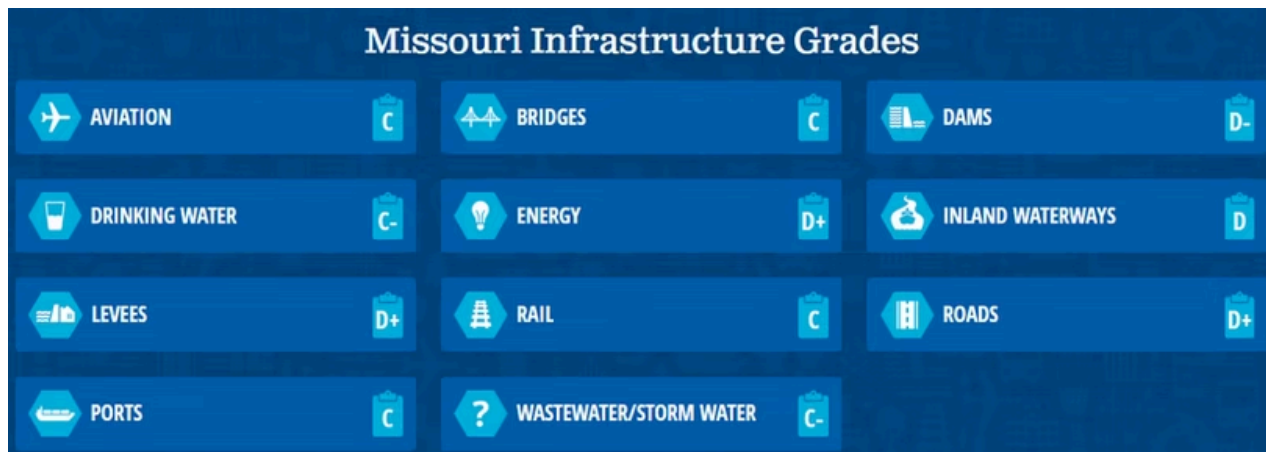
[ASCE STL](#) & [ASCE Kansas City Sections](#) are seeking volunteers to develop the **2026 Report Card for Missouri's Infrastructure!** The [ASCE Infrastructure Report Card](#) assigns a "letter grade" to each sub-category of infrastructure in our state. The Report Card is an important tool for public



outreach and government advocacy. This document is frequently referenced in press releases and utilized by our legislators in Jefferson City during public infrastructure budget discussions.

Our team is looking for:

- **Section Writers** – You will team up with another volunteer to write a 3-4 page write-up on the condition, funding sources, and reliability of a category of infrastructure. As this is a year long commitment, **ASCE offers 7 PDHs** for section writers! Our last Report Card included 11 categories:



- **Release Event Lead** – This individual would coordinate and lead the release event at the Missouri State Capitol in Jefferson City during the 2026 legislative session.

Take a look at the full [2018 ASCE Missouri Infrastructure Report Card](#) and the [Executive Summary/Brochure](#) for an idea of what we're going to produce. **What's the timeline?**

- January 2025 - Kick-Off meeting
- February 2025 & on - Monthly 30-min check-ins
- May 2025 – First draft due
- October 2025 – Second draft due
- January 2026 – Release Event

Let us know if you would like to participate in the upcoming Report Card effort – **we're going to need a lot of help!** - [Alison Graves, ASCE STL Government Relations Chair](#)



65th ANNUAL MISSOURI ASPHALT CONFERENCE

Asphalt pavements are part of the Interstate highways that transport people and goods across the country. Asphalt roads bring us home, and asphalt driveways add to the beauty and value of our neighborhoods. Join colleagues and a host of industry experts for an action-packed in-person 2-day event exploring the latest developments and hottest topics in the asphalt paving field.

**December 3-4, 2024 at Diamond Event Center
Rolla, Missouri**

REGISTRATION NOW OPEN



QUAKESMART PREPAREDNESS WORKSHOP

Tuesday, December 10, 2024 - St. Louis, MO

The nonprofit Federal Alliance for Safe Homes (FLASH), National Earthquake Hazards Reduction Program (NEHRP), Federal Emergency Management Agency (FEMA), and the City of St. Louis Emergency Management Agency (CEMA), are accepting registrations for the free *QuakeSmart Preparedness Workshop* on Tuesday, December 10, 2024 in St. Louis, MO.

The workshop is geared toward building officials, businesses, corporations, engineers, emergency managers, homebuilders, leaders, manufacturers, nonprofits, organizations, policymakers, public officials, risk managers, and small businesses.

DEPARTMENT OF CIVIL ENGINEERING

SPRING 2025

ELECTIVE AND GRADUATE
COURSE OFFERINGS

CVNG 4050/5050 – Advanced Structural Analysis

Monday & Wednesday – 3:10 pm to 4:25 pm

Instructor: Dr. Riyadh Hindi

CVNG 4130/5130 – Bridge Engineering

Monday & Wednesday – 6:15 pm to 7:30 pm

Instructor: Dr. Dan Tobias

CVNG 4370/5370 – River Engineering

Tuesday & Thursday – 3:45 pm to 5:00 pm

Instructor: Eddie Brauer

CVNG 4930/5930-01 – Green Infrastructure

Tuesday & Thursday – 11:00 am to 12:15 pm

Instructor: Dr. Anness Borthakur

CVNG 4930/5930-02 – Modern Methods for Intelligent Transportation Sys.

Tuesday & Thursday – 12:45 pm to 2:00 pm

Instructor: Dr. Tianyi Li

CVNG 4930/5930-03 – Geoenergy Systems

Tuesday & Thursday - 9:30 am to 10:45 am

Instructor: Dr. Tugce Baser

Professionals interested in taking a course or exploring graduate degree options at SLU can take a course as a Non-degree Seeking Student:

<https://loom.ly/CEtmIMU>





15th Americas Conference on Wind Engineering
May 19-22, 2025 — St. Louis, MO
*Center for Hazard Mitigation & Community Resilience
Missouri University of Science and Technology*



When: May 19-22, 2025

Where: St. Charles Convention Center, St. Charles, MO

We look forward to seeing you in St. Louis, Missouri for the **15th Americas Conference on Wind Engineering (ACWE)** taking place May 19-22, 2025 at the St. Charles Convention Center. ACWE provides an opportunity for scientists, engineers, architects, educators and practitioners to discuss wind science & engineering.

For more information, including conference registration and abstract submission, [visit the conference website!](#)

MISSOURI S&T
Global Learning

CIVIL ENGINEERING (MS/DE)

Graduate Certificates — pathway
to your master's degree.

Contemporary Structural Engineering
Geoenvironmental Engineering
Geotechnical Earthquake Engineering
Infrastructure Renewal
Project Engineering and Construction
Management
Surface Water Resources
Building Systems Engineering
Advanced Materials for Sustainable
Infrastructure

Distance Graduate Programs
for Working Professionals.

LEARN MORE

distance.mst.edu/care/

MISSOURI
S&T



Graduate certificates give YOU the opportunity to broaden your knowledge in a particular discipline, learn the latest in developing fields and stay competitive in today's marketplace. By taking a few online courses, you will be able to demonstrate advanced knowledge in the field of civil or environmental engineering.

Online Certificate Programs

- [Advanced Materials for Sustainable Infrastructure](#)
- [Building Systems Engineering](#)
- [Contemporary Structural Engineering](#)
- [Geoenvironmental Engineering](#)
- [Geotechnical Earthquake Engineering](#)

- [Infrastructure Renewal](#)
- [Project Engineering and Construction Management](#)
- [Surface Water Resources](#)

Online Graduate Degrees

Graduate certificate programs may also be used as a pathway to a graduate degree program. **Credits earned in a certificate program can be counted toward the master's degree so long** as you earn a B or better in each certificate course. In this case, you can apply for admission to the department's master's degree programs without needing to submit GRE scores.

JOBS CORNER

[VIEW ALL PARTNER JOB POSTINGS](#)

ASSISTANT/ASSOCIATE TEACHING PROFESSOR

MISSOURI S&T CIVL, ARCHITECTURAL & ENVIRONMENTAL ENGINEERING
DEPARTMENT - ROLLA, MO



SUPERVISORY HYDROLOGIST

CENTRAL MIDWEST SCIENCE CENTER (CMWSC) UNITED STATES
GEOLOGICAL SURVEY - VARIOUS MIDWEST LOCATIONS



ASCE St. Louis Section

St. Louis, MO
asceSTL.org

[Unsubscribe](#)

CONNECT WITH @ASCESTL



© 2024 ASCE St. Louis Section

